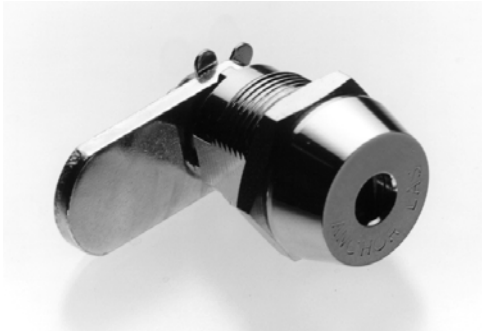


# ANCHOR LAS

## Camlocks

### CAMLOCK 890



#### Applications

A most reliable security camlock available for vending machines, coin boxes, slot machines, pay phones, lockers and other high security applications.

#### Material and finish

Camlock 890 and camlock 890 V. Cylinder drum, detainer discs and end nut of brass. Cam, governor, nut lock washer and hex nut of zinc-plated steel. Cylinder housing of chrome-plated brass.

Door thickness from 1 mm to 7,5 mm.

#### Camlock 890

Function: Cam turns 90 degrees counter clockwise (open-locked).

Key removable in locked position only.

Overall length 34,5 mm.



Option: Camlock 890, as above. First and last disc made of hardened steel.

Also available

#### Camlock 890 V

Function: Cam turns 90 degrees clockwise (open-locked).

Key removable in locked position only.

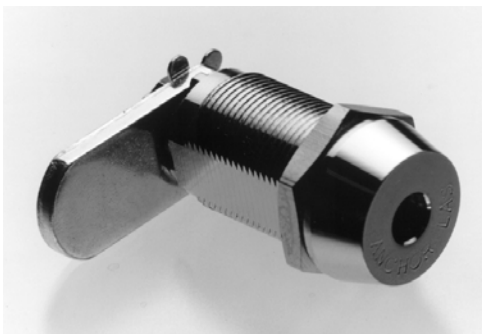
Overall length 34,5 mm.



Option: Camlock 890 V, as above. First and last disc made of hardened steel.



### CAMLOCK 892



#### Applications

A most reliable security camlock available for vending machines, coin boxes, slot machines, pay phones, lockers, office furniture and other high security applications.

#### Material and finish

Camlock 892 and camlock 892 V. Cylinder drum, detainer discs and end nut of brass. Cam, governor, nut lock washer, hex nut and fixing plate of zinc-plated steel. Cylinder housing of chrome-plated brass.

Door thickness from 1 mm to 22,5 mm.

#### Camlock 892

Function: Cam turns 90 degrees counter clockwise (open-locked).

Key removable in locked position only.

Overall length 44,5 mm.



Option: Camlock 892, as above. First and last disc made of hardened steel.

Also available

#### Camlock 892 V

Function: Cam turns 90 degrees clockwise (open-locked).

Key removable in locked position only.

Overall length 44,5 mm.



Option: Camlock 892 V, as above. First and last disc made of hardened steel.

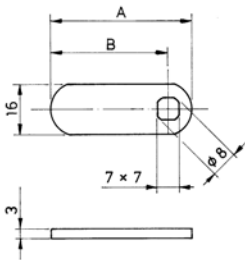




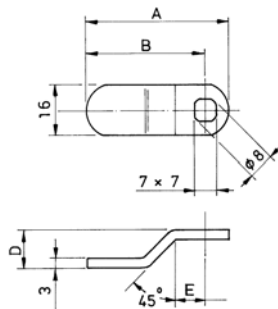
- The ANCHOR LÅS rotating detainer disc cylinder, camlock 892, 9 discs, 1.5 million different key combinations, camlock 890, 8 discs, 300.000 different key combinations.
- The cylinder has no spring-loaded parts, which in other types of mechanism can cause malfunction through wear, dirt, moisture, corrosion or freezing.
- Maximum resistance against picking and manipulation.
- The lock cylinder offers extensive master-keying possibilities. All our camlocks and padlocks can be made to operate with just one key.
- Our extra strong key, thickness 3 mm, is made of nickel silver. The key is design patented.

## ITEMS FOR CAMLOCK 890 AND 892

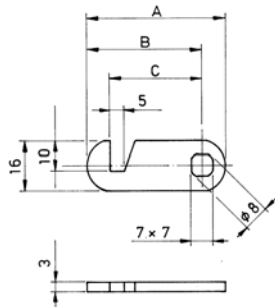
Straight cam



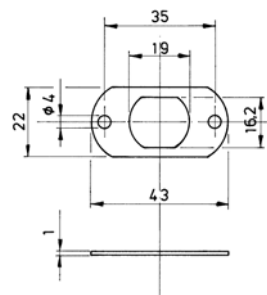
Offset cam



Hooked cam



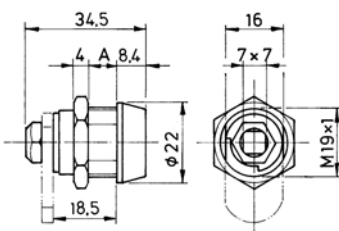
Fitting plate for camlock 892



Type of cam	Dimensions cam m m				
	A	B	C	D	E
Straight cam No 121	21	13,5	-	-	-
Straight cam No 131	31	23,5	-	-	-
Straight cam No 136	36	28,5	-	-	-
Straight cam No 140	40	32,5	-	-	-
Straight cam No 145	45	37,5	-	-	-
Straight cam No 150	50	42,5	-	-	-
Straight cam No 155	55	47,5	-	-	-
Hooked cam No 236	36	28,5	22	-	-
Hooked cam No 240	40	32,5	26	-	-
Hooked cam No 245	45	37,5	31	-	-
Hooked cam No 250	50	42,5	36	-	-
Hooked cam No 255	55	47,5	41	-	-
Offset cam No 342	42	34,5	-	12,5	9,5
Offset cam No 347	47	39,5	-	12,5	9,5
Offset cam No 352	52	44,5	-	12,5	9,5
Offset cam No 438	38	30,5	-	10,5	11
Offset cam No 443	43	35,5	-	10,5	11
Offset cam No 448	48	40,5	-	10,5	11
Offset cam No 535	35	27,5	-	7	11
Offset cam No 539	39	31,5	-	7	11
Offset cam No 544	44	36,5	-	7	11
Offset cam No 549	49	41,5	-	7	11
Offset cam No 635	35	27,5	-	6,5	11
Offset cam No 639	39	31,5	-	6,5	11
Offset cam No 644	44	36,5	-	6,5	11
Offset cam No 649	49	41,5	-	6,5	11
Offset cam No 731	31	23,5	-	5	11
Offset cam No 736	36	28,5	-	5	11
Offset cam No 740	40	32,5	-	5	11
Offset cam No 745	45	37,5	-	5	11
Offset cam No 750	50	42,5	-	5	11

## CAMLOCK 890

Door thickness max 7,5 mm = A



## CAMLOCK 892

Door thickness max 22,5 mm = B

