

ANCHOR LÅS

Chrome Plated Brass Padlocks

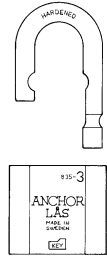
Padlock 835-3 B25 / B50

EN Grade 3



Certified by SBSC in Sweden
Certificate No 04-597

- An all-purpose padlock. 56 mm solid chrome plated brass padlock, shackle dia 11 mm.
- Ideal protection in harsh environments and corrosive atmospheres.
- For storage doors, gates, trailers, roller-shutter doors etc.
- Double locking hardened stainless steel ball bearing.
- Key removable only in locked position.
- Option: Padlock 835-3 L, removable shackle.



Padlock 835-3 L

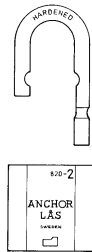
Padlock 820-2 B25 / B60 / B110

EN Grade 3



Certified by SBSC in Sweden
Certificate No 04-597

- An all-purpose padlock. 46 mm solid chrome plated brass padlock, shackle dia 8 mm.
- Shackle available in stainless steel and hardened steel.
- Ideal protection in harsh environments and corrosive atmospheres.
- For tool boxes, lockers, trailers, power station switches.
- Double locking hardened stainless steel ball bearing.
- Key removable only in locked position.
- Option: Padlock 820-2 L, removable shackle.



Padlock 820-2 L

Padlock 810-1 B20 / B80

EN Grade 2

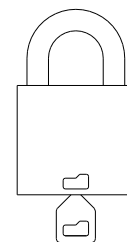



Certified by SBSC in Sweden
Certificate No 04-599

- An all-purpose padlock. 39 mm solid chrome plated brass padlock, shackle dia 6,5 mm.
- Shackle available in stainless steel and hardened steel.
- Ideal protection in harsh environments and corrosive atmospheres.
- For cash boxes, tool boxes, lockers, power station switches.
- Double locking hardened stainless steel ball bearing.
- Key removable only in locked position.

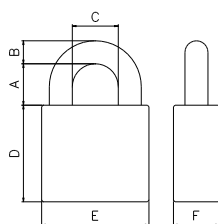


- The ANCHOR LÅS rotating detainer disc cylinder, 9 discs, 1.5 million different key combinations.
- The cylinder has no spring-loaded parts, which in other types of mechanism can cause malfunction through wear, dirt, moisture, corrosion or freezing.
- Maximum resistance against picking and manipulation.
- The lock cylinder offers extensive master-keying possibilities.
- All our padlocks and camlocks can be made to operate with just one key.
- Our extra strong key, thickness 3 mm, is made of nickel silver. The key is design patented.



Use symbol  to insert key in right position.

| Model number | EN Grade | Swedish Padlock Class | Body | | | | | Shackle | | | | | Keying | | |
|--------------|----------|-----------------------|----------|--------|------------------|------------------|---------------|----------|--------|-----------------|------------------|------------------|-----------|---------------|---------------|
| | | | Material | Finish | Thickness mm (F) | Thickness mm (E) | Height mm (D) | Material | Finish | Diameter mm (B) | Clearance mm (A) | Clearance mm (C) | Rekeyable | Non Rekeyable | Master-keying |
| 880-4 | 5 | 4 | HS | CH | 30 | 70 | 63 | HS | CH | 15 | 27 | 29,5 | ● | | ● |
| 880-4 B50 | 5 | 4 | HS | CH | 30 | 70 | 63 | HS | CH | 15 | 50 | 29,5 | ● | | ● |
| 800-3 | 4 | 3 | HS | CH | 25 | 60 | 56 | HS | CH | 11 | 28 | 28 | ● | | ● |
| 800-3 B50 | 4 | 3 | HS | CH | 25 | 60 | 56 | HS | CH | 11 | 50 | 28 | ● | | ● |
| 833-3 | 4 | 3 | HS | CH | 25 | 60 | 88 | HS | CH | 11 | 28 | 28 | ● | | ● |
| 835-3 | 3 | 2 | BR | CH | 20 | 56 | 51 | HS | CH | 11 | 25 | 27 | ● | | ● |
| 835-3 B50 | 3 | 2 | BR | CH | 20 | 56 | 51 | HS | CH | 11 | 50 | 27 | ● | | ● |
| 820-2 | 3 | 2 | BR | CH | 19 | 46 | 46 | HS | CH | 8 | 25 | 24 | ● | | ● |
| 820-2 B60 | 3 | 2 | BR | CH | 19 | 46 | 46 | HS | CH | 8 | 60 | 24 | ● | | ● |
| 820-2 B110 | 3 | 2 | BR | CH | 19 | 46 | 46 | HS | CH | 8 | 110 | 24 | ● | | ● |
| 820-2 | 3 | 2 | BR | CH | 19 | 46 | 46 | SS | - | 8 | 25 | 24 | ● | | ● |
| 820-2 B60 | 3 | 2 | BR | CH | 19 | 46 | 46 | SS | - | 8 | 60 | 24 | ● | | ● |
| 820-2 B110 | 3 | 2 | BR | CH | 19 | 46 | 46 | SS | - | 8 | 110 | 24 | ● | | ● |
| 810-1 | 2 | 1 | BR | CH | 19 | 39 | 40 | SS | - | 6,5 | 20 | 20,5 | | ● | ● |
| 810-1 B80 | 2 | 1 | BR | CH | 19 | 39 | 40 | SS | - | 6,5 | 80 | 20,5 | | ● | ● |
| 810-1 | 2 | 1 | BR | CH | 19 | 39 | 40 | HS | CH | 6,5 | 20 | 20,5 | | ● | ● |



HS= case hardened steel

SS=stainless steel

BR=brass

CH=chrome plated

| SECURITY GRADE EUROPEAN STANDARD EN 12320 | | | | | | | |
|--|-----|----------------|----------------|--------------------|--------------------|-------------------|-----|
| Requirements | 1 | 2 | 3 | 4 | 5 | 6 | |
| Corrosion, salt spray (time) | | 24 | 24 | 96 | 96 | 96 | h |
| Key retained in open position | no | no | no | yes | yes | yes | |
| Minimum number of differs | 300 | 1 000 | 2 500 | 5 000 | 10 000 | 20 000 | |
| Non-interpassing of keys with just one Interval differ – Torque on key | 1 | 1 | 1,5 | 1,5 | 1,5 | 1,5 | Nm |
| Load on cylinder plug or locking mechanism | | | 4 | 5 | 10 | 15 | kN |
| Torque resistance of cylinder plug | | 2,5 | 5 | 15 | 20 | 30 | Nm |
| Pulling of shackle/staple | 3 | 5 | 15 | 30 | 70 | 100 | kN |
| Twisting of shackle/staple | 40 | 100 | 200 | 450 | 1 200 | 2 500 | Nm |
| Cutting of shackle/staple | 6 | 15 | 25 | 35 | 70 | 100 | kN |
| Blow on lock body and shackle/staple (weight/g x height/mm) | | | 1 250 x 800 | 3 050 x 1 000 | 6 550 x 1 400 | 7 150 x 1 500 | x 5 |
| Test temperature | | | -20°C | -20°C | -40°C | -40°C | |
| Drilling | | | | 2 | 4 | 8 | min |
| Sawing | | | | 2 | 4 | 8 | min |
| Requirements | | 1 | 2 | 3 | 4 | 5 | |
| SWEDISH PADLOCK CLASS SSF STANDARD | | | | | | | |
| Extra tests SSF padlock standard | | 1 | 2 | 3 | 4 | 5 | |
| Lock picking and tampering | | 2 simple tools | 2 simple tools | 10 composite tools | 10 composite tools | 30 advanced tools | min |
| Attack with manual Tools | | | | 5 | 10 | 15 | min |